



# ANOKHI

Spring/Summer Wholesale

## SPRING IS HERE!

We are celebrating with **SPECIAL DEALS** inside to add pops of color to your store as a welcome to the warm weather and your customers.

# Scarves

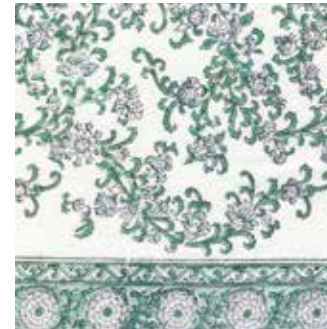
All of our scarves are 100% cotton voile.

15x72" rectangle scarf prints are **\$11** (regularly \$16)!

*Note - price is for the following prints and shape only.*



EUCALYPTUS IKAT



FILIGREE



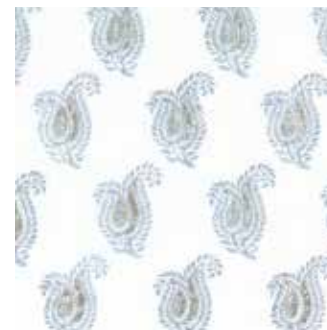
STARRY SKY



SNOWDROPS



CORNFLOWER LACE



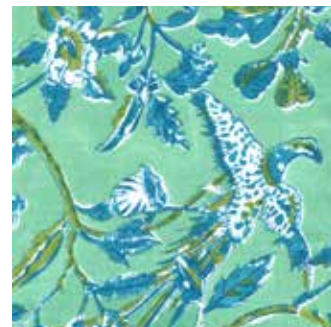
DOVE PAISLEY



BLUE ROSES



BRIAR ROSE BLUE



GREEN PHOENIX



BOTANICAL BLUE



THORN TREES



FILIGREE



ACADIAN RED



GENTLE BOUQUET



SUMMER WILDFLOWERS



SUMMER SOLSTICE



PINK CHRYSANTHEMUM



RAMBLING ROSE



ORCHIDS



ACADIAN RED



GOLDENROD STRIPE



COLORED SANDS



TRELLIS



PEACH DECO



COLORED SANDS



GIANT PAISLEY



GOLDENROD STRIPE



LAVENDER INDIA



PRIDE AND PRIMROSE



VIOLET CYPRESS



BRIAR ROSE



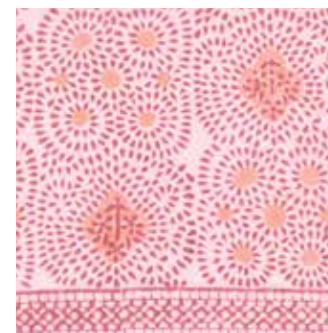
BRIAR ROSE AQUA



BRIAR ROSE



SCATTERED FLOWERS



PINK DOTS



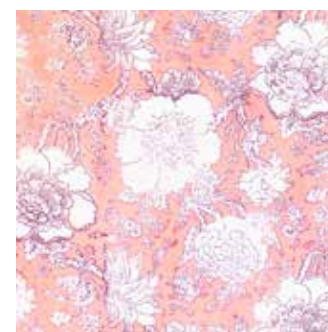
RASPBERRY SEAFLOWER



LAVENDER TEARDROP



SKY PALACE



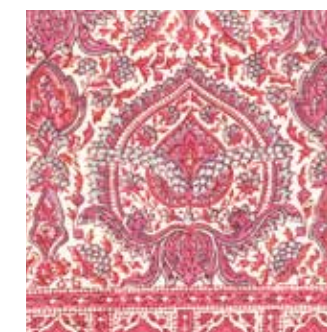
SWEET CORAL



PINK DOTS



SALMON TRUMPET FLOWER



ROSE PALACE

# Artisan Blouses

It's all in the details. From delicate gathering at the neckline to the cloth-covered button closure at the 3/4 sleeve, this pretty top is an easy favorite.

This blouse (in a size small) measures 24" down the center back, 23" from seam-to-seam under the arms, and has 4" side slits for ease of movement.

Hand block printed on 100% cotton voile.

**S (6-8), M (10-12), L (14-16): \$42 now \$27**



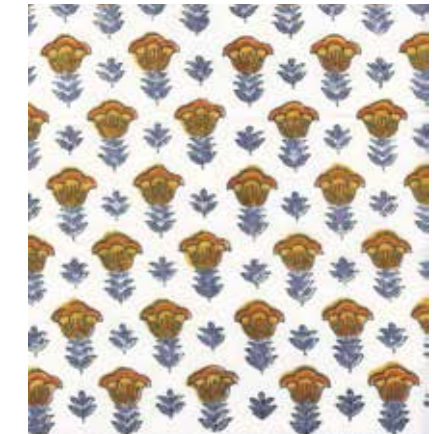
CORAL MOTIF



SWEET ROSE



LAPIS TULIP



LAPIS TULIP



GREY STRIPE

# Shorts

Short and flirty, these lightweight shorts have two pockets and an elastic waist with a drawstring. 4" inseam.

Hand block printed on 100% cotton voile.

XS (2-4), S (6-8), M (10-12), L (14-16): ~~\$28~~ now \$18



LAPIS TULIP



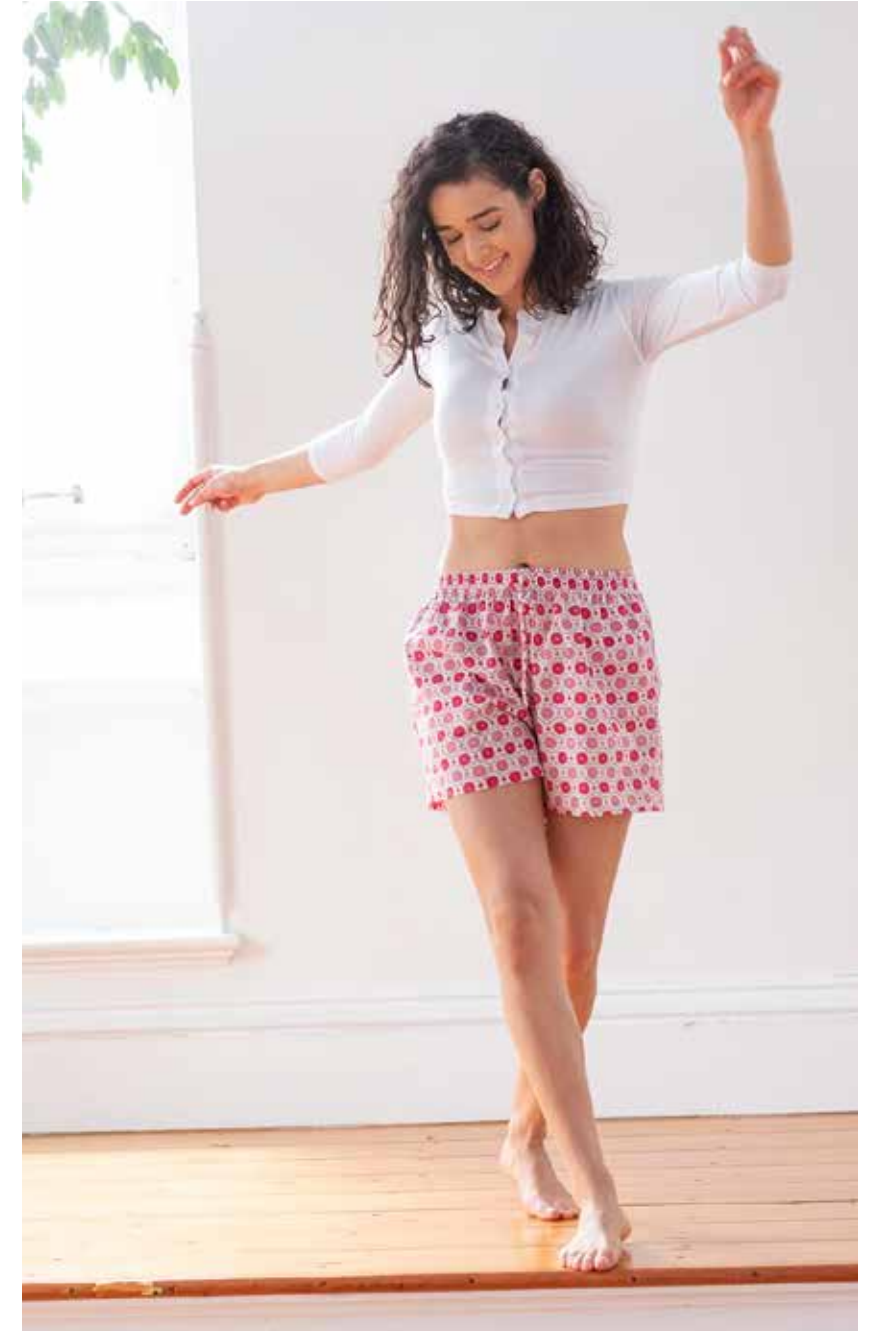
CORAL MOTIF



GOLD TULIP



MOROCCAN GREY



SWEET ROSE



VINE LEAVES



ENGLISH GARDEN

# Sara Jackets

The perfect light jacket for cooler days or for air conditioned spaces. Elegant asian inspired lines and an easy fit.

The center back length is 28 inches, and the jacket measures 26.5 inches from side seam to side seam at back (on a size S/M).

Hand block printed on 100% cotton voile.

**S/M, M/L: \$45 now \$30**



GOLD STAMP



WILD ROSES



NAVY STRIPE



LOTUS